

GAMMA KNIFE® RADIOSURGERY  
AT BEAUMONT IS A SAFE,  
NON-INVASIVE METHOD FOR  
TREATING NEUROLOGIC CONDITIONS.

IT IS A TECHNIQUE THAT SPARES  
HEALTHY BRAIN TISSUE, WHILE  
DESTROYING TUMORS AND  
LESIONS. PATIENTS WHO HAVE  
GAMMA KNIFE® TREATMENT  
USUALLY RETURN TO THEIR  
NORMAL LEVEL OF ACTIVITY  
WITHIN 24 HOURS.

[www.beaumontgammaknife.org](http://www.beaumontgammaknife.org)

**THE GAMMA KNIFE® CENTER  
AT BEAUMONT**

Imaging Center  
William Beaumont Hospital  
3601 W. Thirteen Mile Road  
Royal Oak, Michigan 48073-9952

NONPROFIT ORGANIZATION  
US POSTAGE  
**PAID**  
PERMIT NO 404  
ROYAL OAK MI

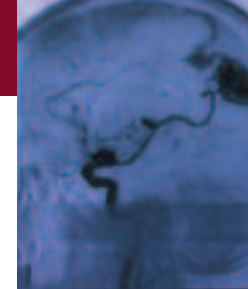
P1083 0707C

**PATIENT INFORMATION**

**GAMMA KNIFE® RADIOSURGERY,  
LEADING EDGE TECHNOLOGY**



**THE GAMMA KNIFE® CENTER  
AT BEAUMONT**



## WHAT IS GAMMA KNIFE® RADIOSURGERY?

The Gamma Knife® is a treatment device with the ability to treat brain tumors, vascular malformations, and functional disorders (neurologic pain and movement disorders) without the risks of open surgery such as general anesthesia, infection, and bleeding. There is no cutting or incisions made with this treatment. The Gamma Knife® uses 201 focused beams of radiation to deliver a highly therapeutic dose to a target with sub-millimeter precision. Recovery is quick, and the treatment is generally administered on an outpatient basis.

A multidisciplinary team including surgeons, radiation oncologists, and radiation physicists work together to generate an optimal treatment plan delivering a high dose of radiation to the target while sparing the surrounding normal brain.

## IS THERE ANY PREPARATION REQUIRED FOR GAMMA KNIFE® RADIOSURGERY?

There is no special preparation required prior to your arrival at the Gamma Knife® Center on the day of your treatment.

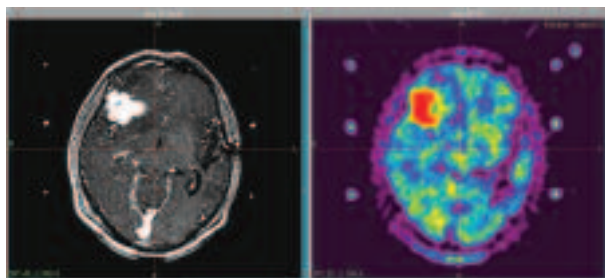


## WHAT HAPPENS DURING GAMMA KNIFE® RADIOSURGERY?

Upon your arrival at the Gamma Knife® Center, the treatment team will explain the entire procedure in detail.

To ensure accurate treatment, a targeting frame is fitted on your head. This helps the treatment team to pinpoint the target, prevents any movement during the procedure, and allows for maximal accuracy of the radiation beams. The frame is attached to your head with screws using local anesthesia to make the placement as painless as possible.

Detailed imaging studies (such as a MRI scan, CT scan, or Angiogram) will then be performed allowing for the precise definition of the desired target (tumor or lesion) in the Gamma Knife® treatment planning software.



Once imaging is complete, you will be taken to a quiet area where you may rest while your physicians and the remainder of the Gamma Knife® team create your treatment plan. This will likely require one to two hours as every treatment plan is unique and optimized to the specific requirements of the individual patient. During this time, you may sleep, watch TV, read, visit with family, etc.

When the team has completed your treatment plan, it is time for treatment. No anesthesia is required, but you may be given medications to help you relax throughout the treatment. The Gamma Knife® unit looks similar to a CT scan machine. You will lie on a treatment couch, and the head frame will be attached to the appropriate treatment

helmet. The helmet is the device used to focus the 201 radiation beams precisely on the target. The treatment itself is completely painless. The couch smoothly slides into position in the Gamma Knife® machine. You will be closely monitored during the procedure by video and will be in constant contact with the treatment team by an intercom connection. Most treatments will last between twenty and ninety minutes, depending on your personalized plan.

When treatment is over, your doctor will remove the head frame. Some patients may experience swelling or mild headache where the frame was attached, but this is relatively rare. Depending on what your doctor feels appropriate, you may have to stay in hospital for several hours or, rarely, overnight for observation.

Gamma Knife® Radiosurgery exerts its effects over time. Your doctor will discuss with you the optimal way to determine the success of the procedure. Since this treatment is designed to stop the growth, shrink, or eliminate tumors/lesions, additional MRI or CT scans in the weeks to months following Gamma Knife® Radiosurgery will likely be indicated.

## IS THIS TREATMENT COVERED BY INSURANCE?

Many insurance companies cover Gamma Knife® radiosurgery, but it is advisable to call your insurance company (using the number on the back of your card) to ensure that your treatment will be covered.

## HOW DO I SCHEDULE GAMMA KNIFE® RADIOSURGERY?

To schedule treatment, call the Gamma Knife® Center at 1.800.884.0964 or 1.248.551.1190.